



GAT MONTHLY MEMBERSHIP PROGRESS REPORT

Results as of: 3/31/2022

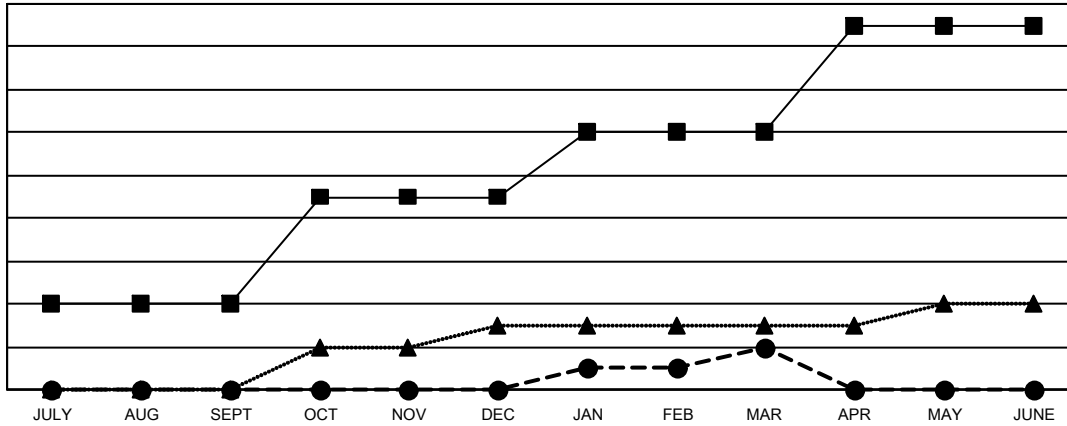
Multiple District 13

LOCATION: OHIO

Clubs			
RESULTS FOR 2021-2022			
QUARTER	NEW CLUB GOAL	NEW CLUBS	DROPPED CLUBS
JULY/AUG/SEPT	4	0	3
OCT/NOV/DEC	5	0	3
JAN/FEB/MAR	3	2	2
APR/MAY/JUNE	5	0	0

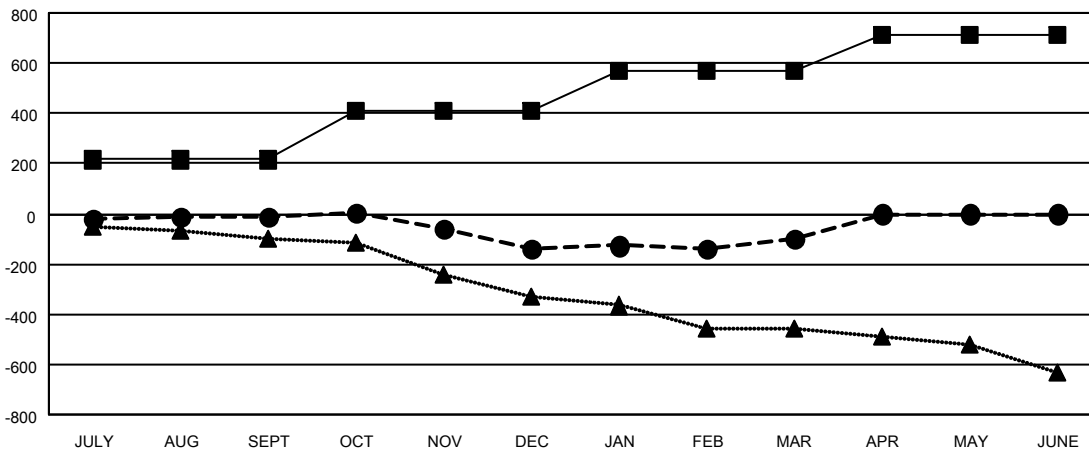
Members			
RESULTS FOR 2021-2022			
QUARTER	MEMBER GROWTH NET GOAL	MEMBER GROWTH ACTUAL	DROPPED MEMBERS ACTUAL (including transfers)
JULY/AUG/SEPT	215	242	221
OCT/NOV/DEC	196	228	342
JAN/FEB/MAR	160	250	185
APR/MAY/JUNE	142	0	0

GOALS AND ACTUAL NEW CLUBS CUMULATIVE



- - CURRENT YEAR GOALS FOR NEW CLUBS
- - CURRENT YEAR ACTUAL NEW CLUBS
- ▲ - LAST YEAR ACTUAL NEW CLUBS

GOALS AND ACTUAL MEMBERS CUMULATIVE



- - MEMBER GROWTH NET GOAL
- - MEMBER GROWTH ACTUAL
- ▲ - LAST YEAR MEMBERSHIP ACTUAL

DROPPED CLUBS: 8	183 CLUBS OF 376 ADDED 1 OR MORE NEW MEMBERS	GENDER DISTRIBUTION
DROPPED MEMBERS	CLICK HERE FOR CUMULATIVE MEMBERSHIP DATA	MALE 7,011 (69.18%)
DECEASED 167		FEMALE 3,109 (30.68%)
CLUB CANCELLED 9		NON BINARY 0 (0.00%)
OTHER 572		PREFER NOT TO ANSWER 14 (0.14%)
TOTAL 748		TOTAL FAMILY UNIT MEMBERS 2,100
		FAMILY MEMBERS PAYING HALF DUES 1,071